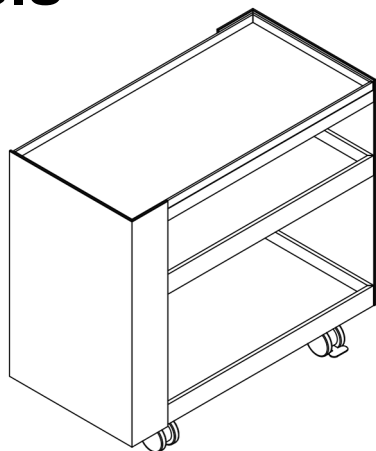
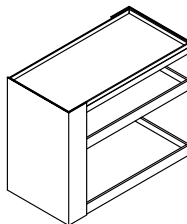


# Charles Bar Cart With Wheels



①



②



③



④




## List

- ① Cabinet\*1
- ② Casters (with brakes)\*2
- ③ Caster\*2
- ④ Open-end wrench\*1

## Install

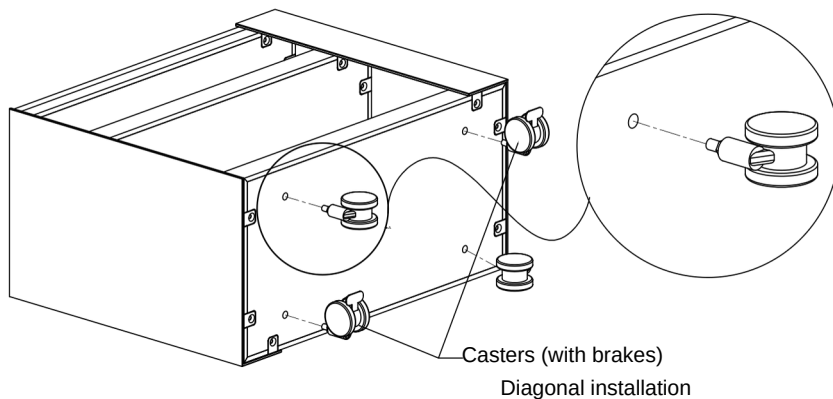
Installation Difficulty ★  
Estimated Time 10min

Personnel required   
Other tools None

Installation Steps →

### Step 1

- ① Before installation, please lay packaging cartons or cushioning materials on the ground to avoid damage to the goods and the floor.
- ② Place the cabinet with its back facing down on the carton, and then screw the four casters into the screw holes on the bottom plate of the cabinet, as shown in Figure 1. (Note: The two casters with brakes need to be installed diagonally.)
- ③ Finally, tighten the four casters with an open-end wrench, as shown in Figure 2, and the trolley is installed.



Open-end wrench\*1

