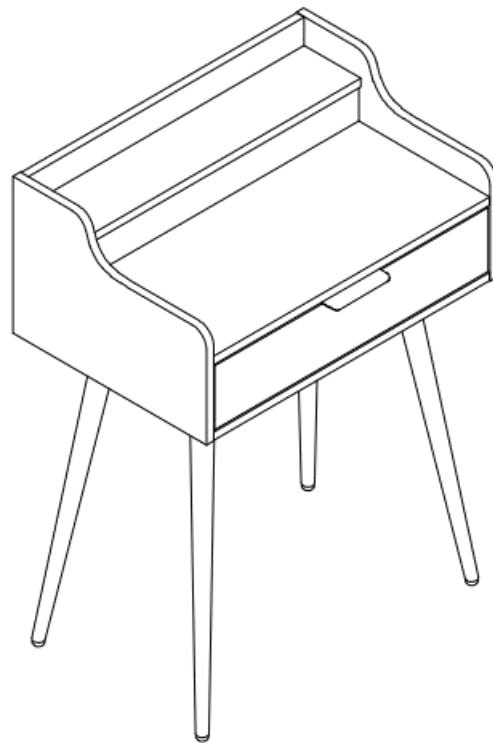




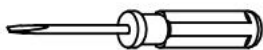
COZYMATIC

**Vose Makeup Vanity Set with
Stool and Mirror**

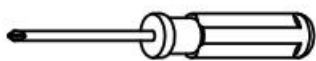
Assembly Instructions



Accessories list

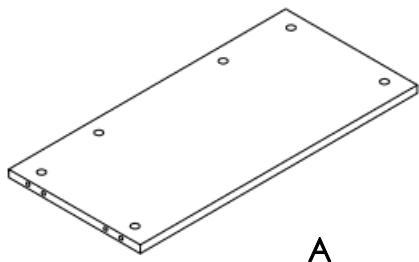


Flat-blade screwdriver

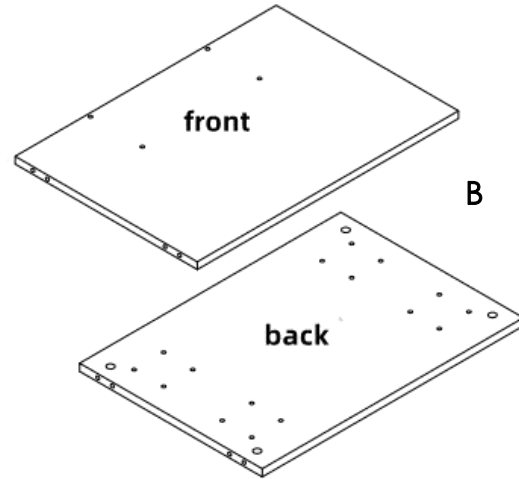


Phillips screwdriver

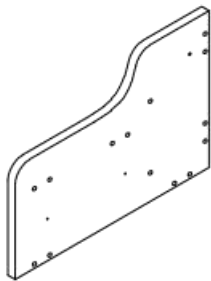
1			26PCS
2			26PCS
3			12PCS
4			1PCS
5		ø3.5*12	10PCS
6		ø3.5*30	8PCS
7			16PCS
8			1PCS
9			2PCS
10			1PCS



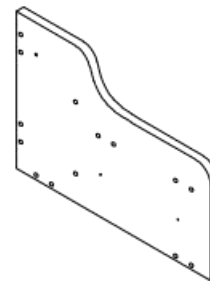
A



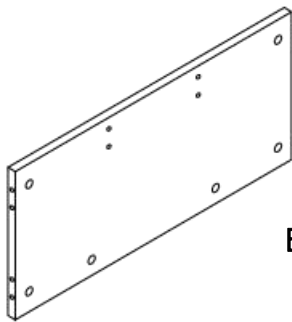
B



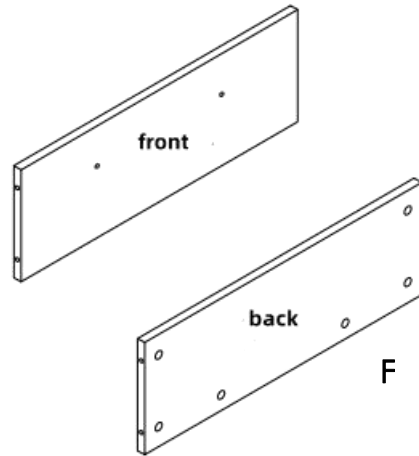
C



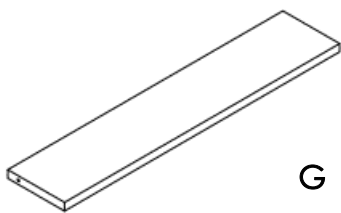
D



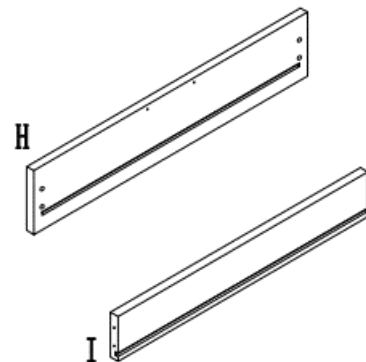
E



F

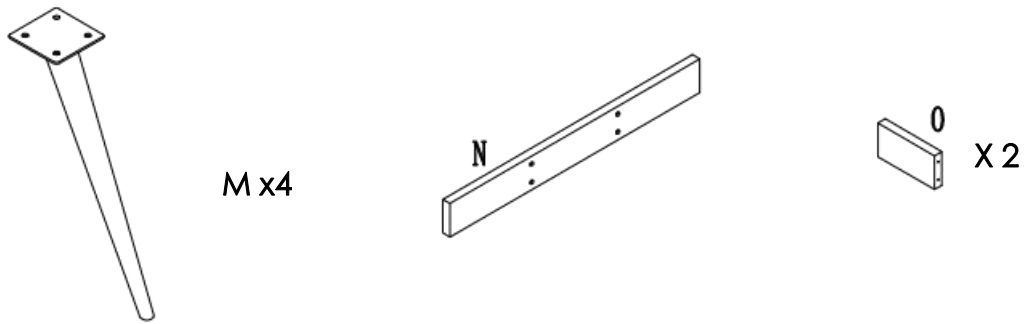
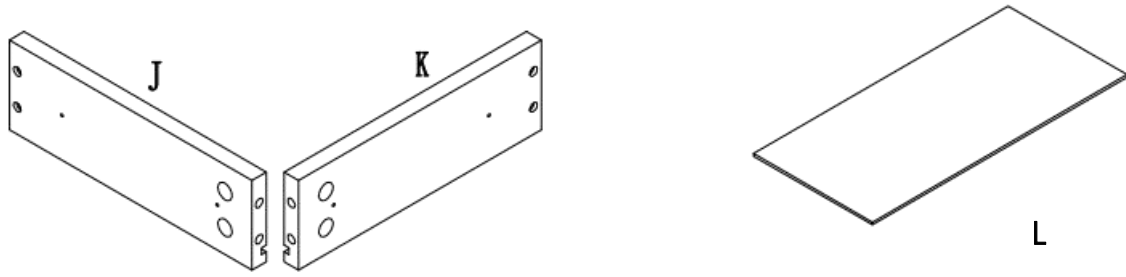


G

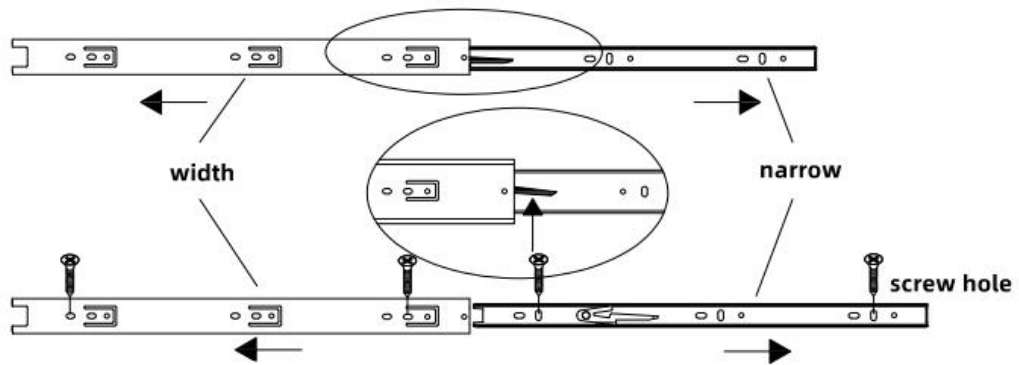


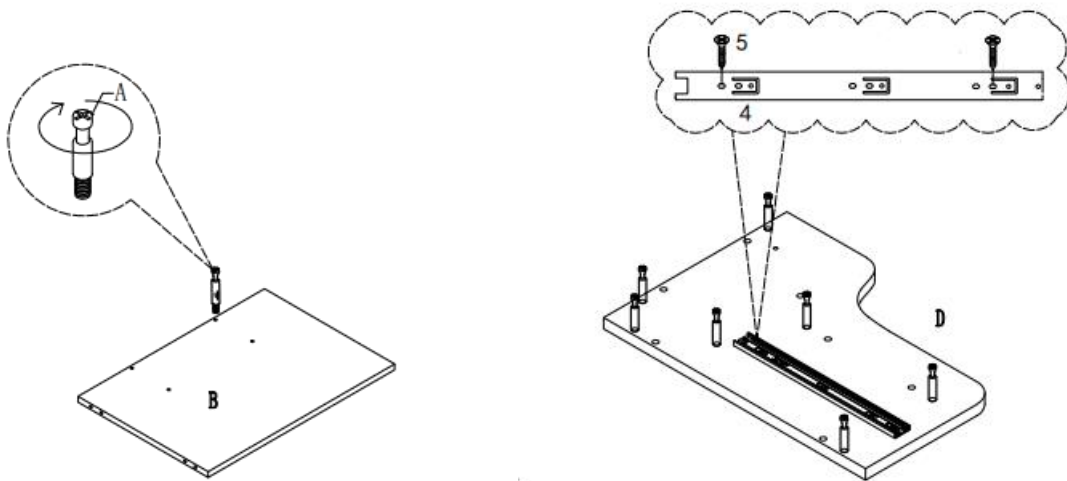
H

I



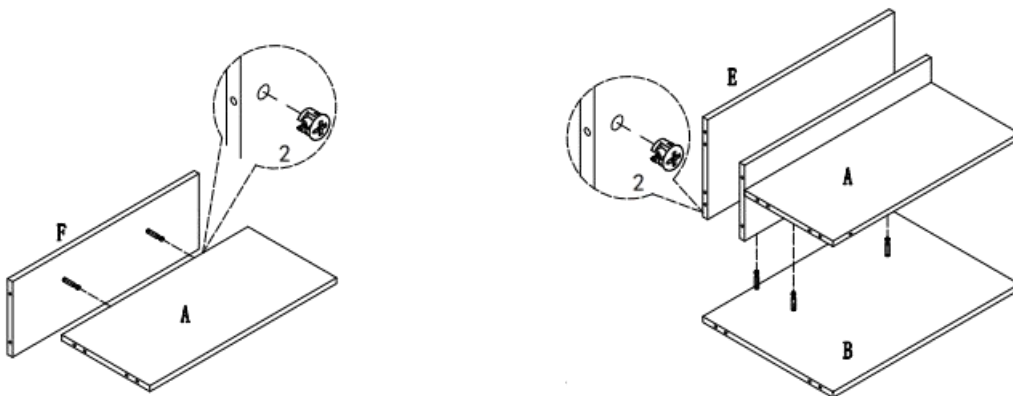
Rail installation method



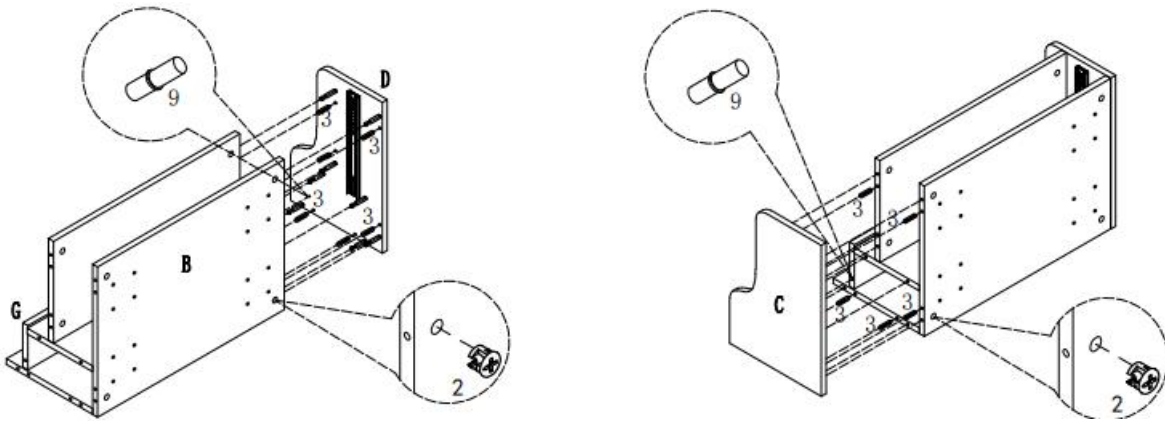


Take all the parts out of the package, check them out and start the installation.

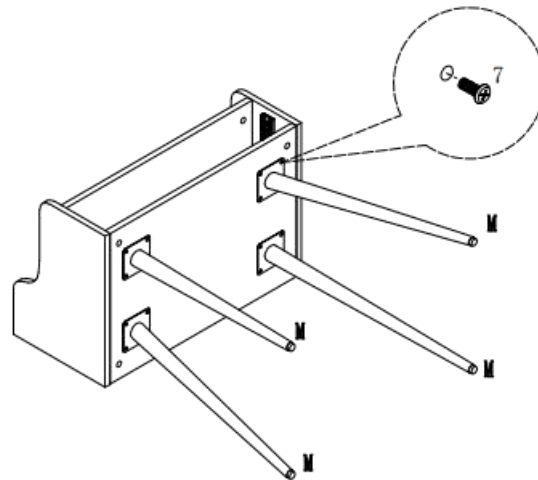
1. Rotate (1) in the direction of the arrow and install it into the bottom plate (B), the left and right side plates (C) (D), the neutral plate (F), and the rubber particles of the extraction surface (H).
2. Disassemble the guide rail, fix the wide part on the (C) (D) side plate, and tighten the screws



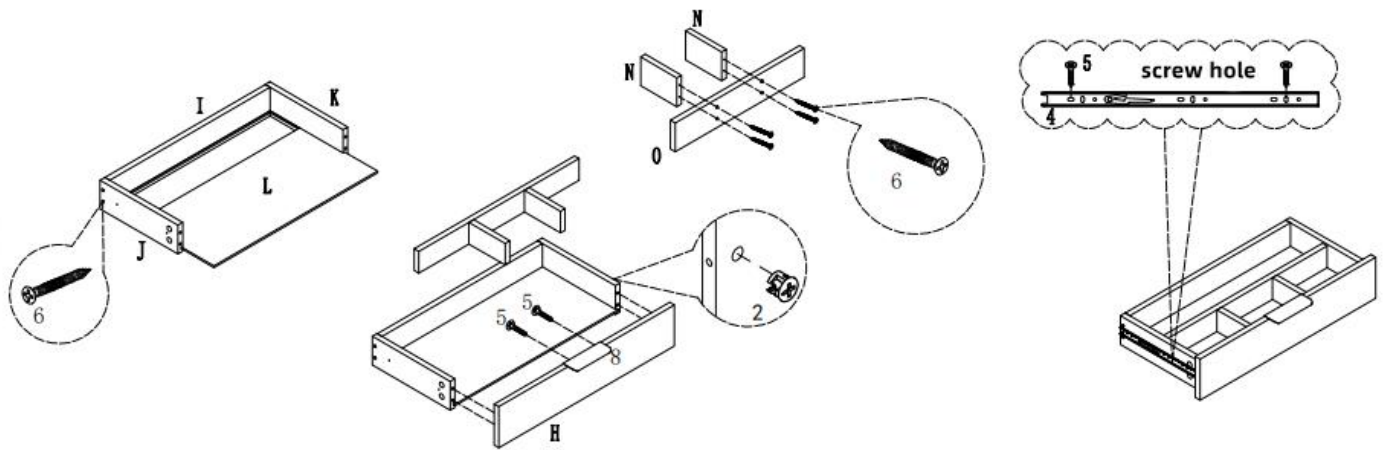
3. Connect (A) (F), linked with (1), and tighten (2) clockwise
4. Connect the back panel (E) and the installed panel (A) with (1), and tighten (2) clockwise



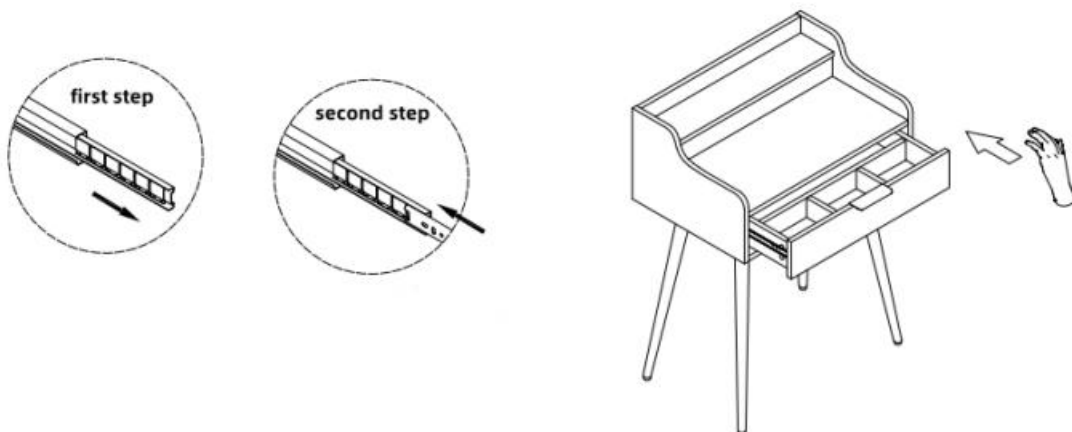
5. Connect the right side panel (D) to the installed cabinet with (1) (3), the flip panel (G) to connect with (9), and tighten the nut (2) clockwise
6. Connect the left side panel (C) to the installed cabinet with (1) (3), the flip panel (G) to connect with (9), and tighten the nut (2) clockwise



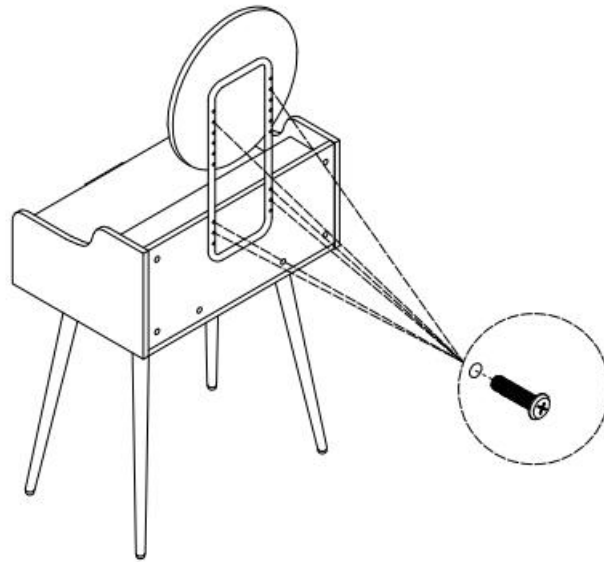
7. Secure the foot (M) to the base plate (B) with Phillips bolts (7)



8、 Pull out the surface (H), the left and right side (J) (K), the rear panel (I), the bottom (L), the drawer transverse partition (N), the drawer vertical partition (O), and use (1) (6) Link, tighten (2) clockwise, install the handle (8) with the self-tapping screw (5), fix the narrow part of the three-section track (4) on the (J) (K) with self-tapping bolts, and tighten Self-tapping screws (5)



- 9、
- ① Pull out the rails and marbles in the upper sliding rail of the cabinet first
 - ② Align the track on the drawer with the pulled out marble track and put it in slowly
- 10、 Put the installed drawer into the cabinet, pull it a few times to see if it is smooth, check the size of the gap around it, if it is different, adjust it manually



11、 Fix the hardware frame and mirror on the installed cabinet with screws